

Warton Crag Quarry Car Park SD 4972

Warton Crag Quarry was a working limestone quarry which closed in 1966. The quarry floor was left to itself and was slowly recolonised. It was bought by Lancaster City Council in 1991. The cliffs themselves are used by climbers between August and February. The area under the cliffs was fenced off and the central area by the car park was landscaped and seeded to form a species-rich grassland.

This central area which has a raised area with the path on together with an area of woodland which was planted at the same time to the east of the circular path forms our recording area.





Central grassland July 2011



Central grassland August 2013

There is no historical data for this small area. The monad itself has been well recorded for many years but this was for a much wider area. It was decided to keep the historical data in the list.

Recording began at the end of June 2023 by Pam McInnes, Kathy Chandler and Lucy Thirlwell (63 species) and an additional 33 species have since been added by Pam McInnes, Hilary Smith and Lucy Thirlwell.

The site is managed by a group of volunteers led by Belinda Barclay and the National Landscape team.

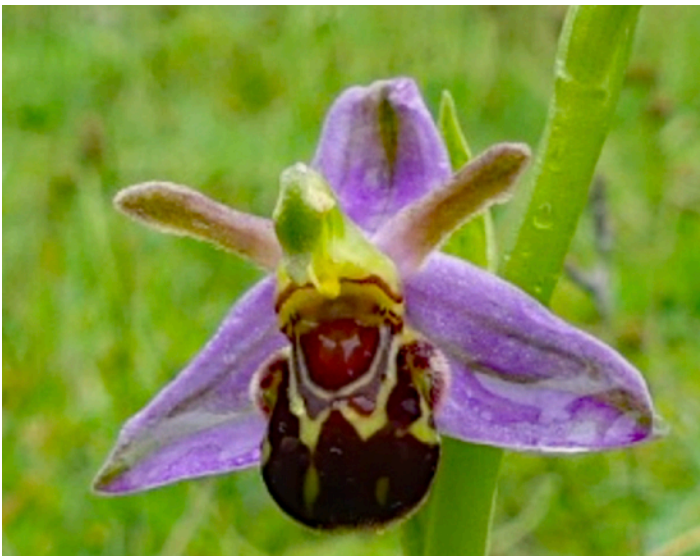
Views 2024





139 species have been recorded in the monad in the past but not specifically at in the area being recorded. The 98 species below were recorded in 2024.

Bee Orchid and Red Bartsia



Taxa	common name	2024	Taxa	common name	2024
Acer campestre	Field Maple	yes	Leucanthemum vulgare	Oxeye Daisy	yes
Acer pseudoplatanus	Sycamore	yes	Ligustrum vulgare	Wild Privet	yes
Achillea millefolium	Yarrow	yes	Lolium perenne	Perennial Rye-grass	yes
Agrimonia eupatoria	Agrimony	yes	Lotus corniculatus	Birdsfoot Trefoil	yes
Alchemilla xanthochlora	Lady's Mantle Xanth	yes	Luzula campestris	Field Woodrush	yes
Alliaria petiolata	Garlic Mustard	yes	Medicago lupulina	Black Medick	yes
Alnus glutinosa	Alder	yes	Odonites vernus	Red Bartsia	yes
Anthoxanthum odoratum	Sweet Vernal Grass	yes	Ononis repens	Rest Harrow	yes
Arrhenatherum elatius	False Oat Grass	yes	Ophrys apifera	Bee Orchid	yes
Bellis perennis	Daisy	yes	Origanum vulgare	Wild Marjoram	yes
Betula pendula	Silver Birch	yes	Oxalis acetosella	Wood Sorrel	yes
Brachypodium sylvaticum	False Brome	yes	Plantago major	Greater Plantain	yes
Buddleja davidii	Buddleja	yes	Plantago media	Hoary Plantain	
Cardamine pratensis	Cuckoo Flower	yes	Poa annua	Annual Meadow Grass	yes
Carex flacca	Glaucous Sedge	yes	Primula veris	Cowslip	yes
Carex otrubae	False Fox Sedge	yes	Primula vulgaris	Primrose	yes
Centaurea Nigra	Common Knapweed	yes	Prunella vulgaris	Selfheal	yes
Cerastium fontanum	Common Mouse Ear	yes	Prunus avium	Wild Cherry	yes
Cirsium arvense	Creeping Thistle	yes	Quercus sp	Oak	yes
Cornus sanguinea	Dogwood	yes	Ranunculus acris	Meadow Buttercup	yes
Corylus avellana	Hazel	yes	Ranunculus ficaria subsp. Ficaria	Lesser Celandine	yes
Crataegus monogyna	Hawthorn	yes	Ranunculus repens	Creeping Buttercup	yes
Cynosurus cristatus	Crested Dog's tail	yes	Rhinanthus minor	Yellow Rattle	yes
Dactylis glomerata	Cocksfoot	yes	Rubus fruticosus sp	Bramble ag	yes
Dactylorhiza fuchsii	Common Spotted Orchid	yes	Rumex obtusifolia	Broad-leaved Dock	yes
Epilobium montanum	Broad- leaved Willowherb	yes	Salix caprea	Goat Willow	yes
Euphrasia species	Eyebright	yes	Sanguisorba minor	Salad Burnet	yes
Fagus sylvatica	Beech	yes	Scabiosa columbaria	Small Scabious	yes
Fragaria vesca	Wild Strawberry	yes	Scorzonera autumnalis	Autumn Hawkbit	yes
Fraxinus excelsior	Ash	yes	Secale cereale	Rye Grass	yes

Taxa	common name	2024	Taxa	common name	2024
Galium aparine	Cleavers	yes	Senecio jacobaea	Common Ragwort	yes
Galium verum	Lady's Bedstraw	yes	Silene vulgaris	Bladder Campion	yes
Geranium dissectum	Cut-leaved Cranesill	yes	Sonchus asper	Prickly Sowthistle	yes
Geranium Pratense	Meadow Cranesbill	yes	Tamus communis	Black Bryony	yes
Geranium robertianum	Herb Robert	yes	Taraxacum agg	Dandelion sp	yes
Geum urbanum	Herb Bennet	yes	Taraxacum officinale	Common Dandelion	yes
Hedera helix	Ivy	yes	Teucrium scordonia	Wood Sage	yes
Heracleum sphondylium	Hogweed	yes	Tilia cordata	Small leaved Lime	yes
Holcus lanatus	Yorkshire Fog	yes	Trifolium dubium	Lesser Trefoil	yes
Holcus mollis	Creeping Soft -grass	yes	Trifolium pretense	Red Clover	yes
Hypericum hirsutum	Hairy St. Johns Wort	yes	Trifolium repens	White Clover	yes
Hypericum perforatum	Perforate St John's Wort	yes	Tussilago farfara	Colt's Foot	yes
Ilex aquifolium	Holly	yes	Ulex europaeus	Gorse	yes
Juncus articulatus	Jointed Rush	yes	Urtica dioica	Common Nettle	yes
Juncus inflexus	Hard Rush	yes	Veronica chamaedrys	Germander Speedwell	yes
Knautia arvensis	Field Scabious	yes	Veronica serpyllifolia	Thyme-leaved Speedwell	yes
Leontodon hispidus	Rough Hawkbit	yes	Vicia cracca	Tufted Vetch	yes
Leontodon saxatilis	Lesser Hawkbit	yes	Viola riviniana	Dog Violet	yes