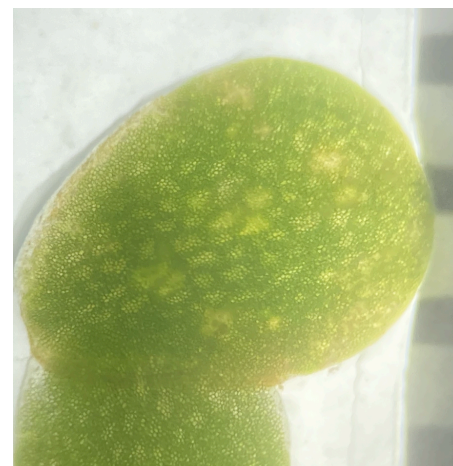
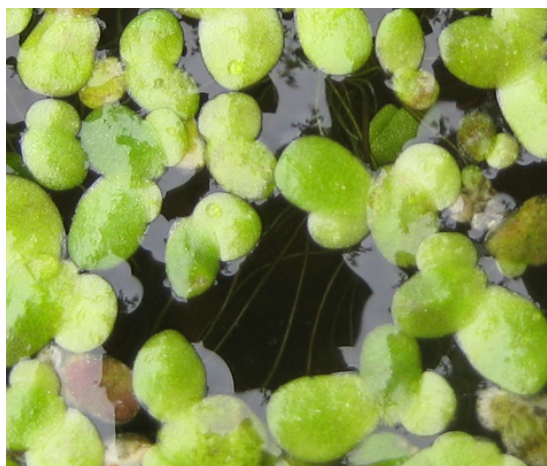


These are small floating perennials with a single rounded flat sided frond with a trailing root. Duckweed forms large patches that can completely cover the surface of the water. Although they have a few tiny 1mm green flowers they mainly spread vegetatively. In the autumn they form small dense buds called turions which sink to the mud at the bottom. In the spring these re-inflate with water and come up to the surface and start to split again. As far as identifying the different species are concerned we have been informed that what we have been recording as Lemna minor is probably a flat form of Lemna gibba. For more information on this see https://bsbi.org/wp-content/uploads/dlm_uploads/Lemna-species-RVL-FJR2B-Handout.pdf To avoid problems please record Lemna minor as Lemna sp unless you are completely sure. We will be following both.



Lemna sp historical data

4 figure	Site	Grid Ref	Recorder	Date	Number	Comments
4578	Ashmeadow	SD4541478525	LF	17/03/24	some	floating in trough in walled garden
4377	Frith Pond	SD4383477494	AK	22/06/24	plenty	along west side of pond
4678	Arnside Moss	SD4680178498	AK	16/08/23	lots	in the ditches on Arnside Moss
4775	Bank Well	SD4717775406	AK	04/05/24	lots	just around the viewing platform
4773	Marsh Hides	SD4773873876	AK	27/08/24	lots	bridge by track to marsh Hides
4677	Black Dyke	SD4687177195	AK	11/08/23	lots	just by the double gates over the bridge on Black Dyke by Middlebarrow
4780	Sandside area	SD4745480413	AK	10/08/24	lots	Disused Railway track at Sandside.
4875	Leighton Moss	SD4893175604	AK	29/08/24	lots	by bridge on lower hide back path
4875	Trowbarrow	SD4875				Trowbarrow quarry.
4877	Gait Barrows	SD4877				Gait Barrows area
4971	Warton Mires	SD4996771666	AK	23/06/24	a little	just south of the bridge by footpath
4976	White Moss	SD4985476882	AK	05/05/24	plenty	both sides of the dyke where it goes under the footpath
4979	Beetham	SD4979				Beetham
5072	Senset Well	SD5049572213	LF	26/08/24	plenty	in pool and feeder

